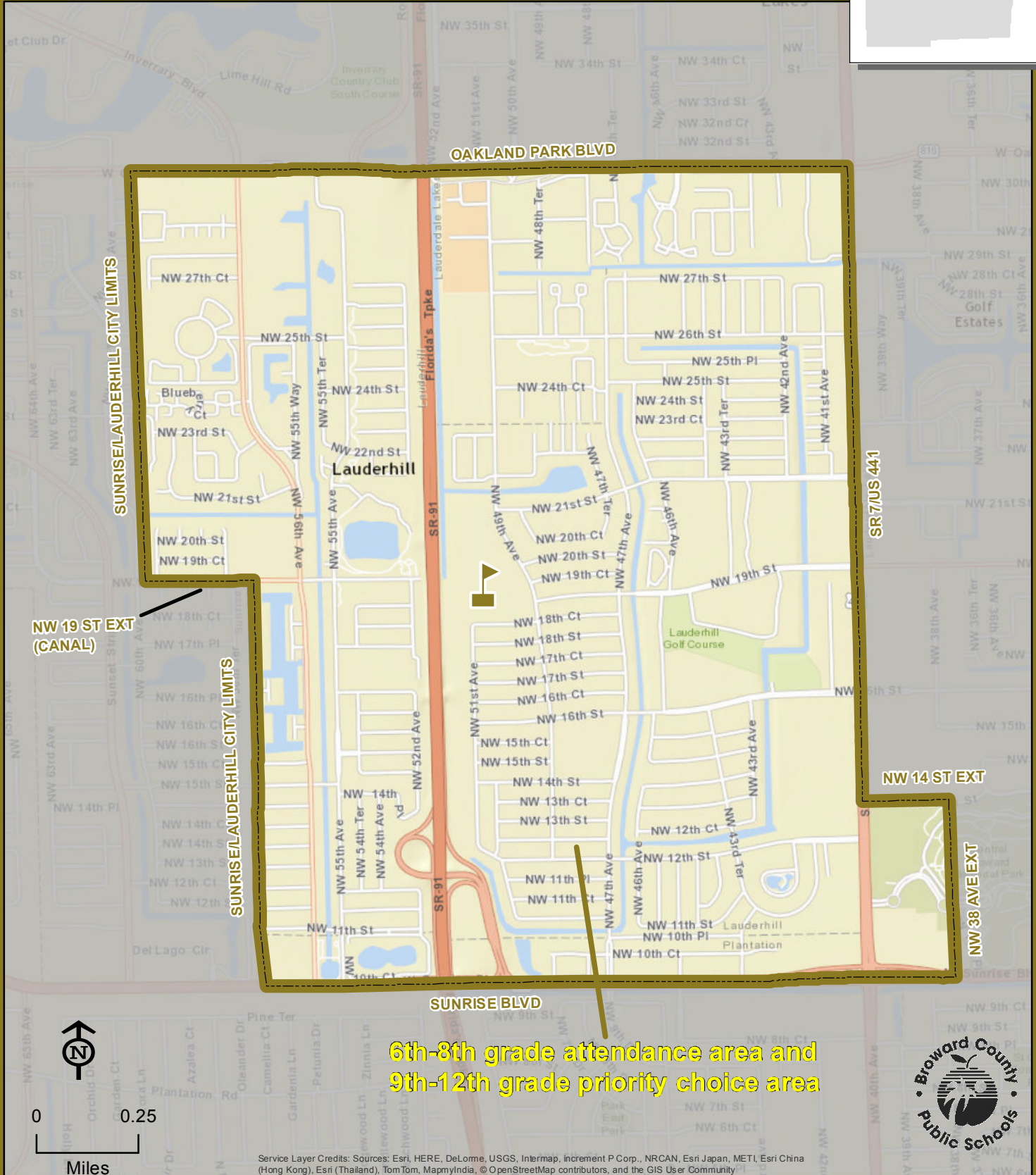


LAUDERHILL 6-12

1901 NW 49 AVENUE
LAUDERHILL, FLORIDA 33313
754-322-3600

Magnet School



6th-8th grade attendance area and
9th-12th grade priority choice area

Service Layer Credits: Sources: Esri, HERE, DeLorme, USGS, Intermap, increment P Corp., NRCAN, Esri Japan, METI, Esri China (Hong Kong), Esri (Thailand), TomTom, MapmyIndia, © OpenStreetMap contributors, and the GIS User Community

THIS MAP IS FOR CONCEPTUAL PURPOSES ONLY AND SHOULD NOT BE USED FOR LEGAL BOUNDARY DETERMINATIONS



SUNRISE/LAUDERHILL CITY LIMITS

SUNRISE/LAUDERHILL CITY LIMITS

LAUDERHILL 6-12

SR 7/US 441

NW 14 ST EXT

NW 38 AVE EXT

NW 19 ST EXT
(CANAL)

SUNRISE BLVD

OAKLAND PARK BLVD

Lauderhill

Lauderhill
Plantation

Lauderhill
Golf Course